

OUR MISSION & VISION

MISSION

The Wallace Center brings together diverse people and ideas to co-create solutions that build healthy farms, equitable economies, and resilient food systems.

VISION

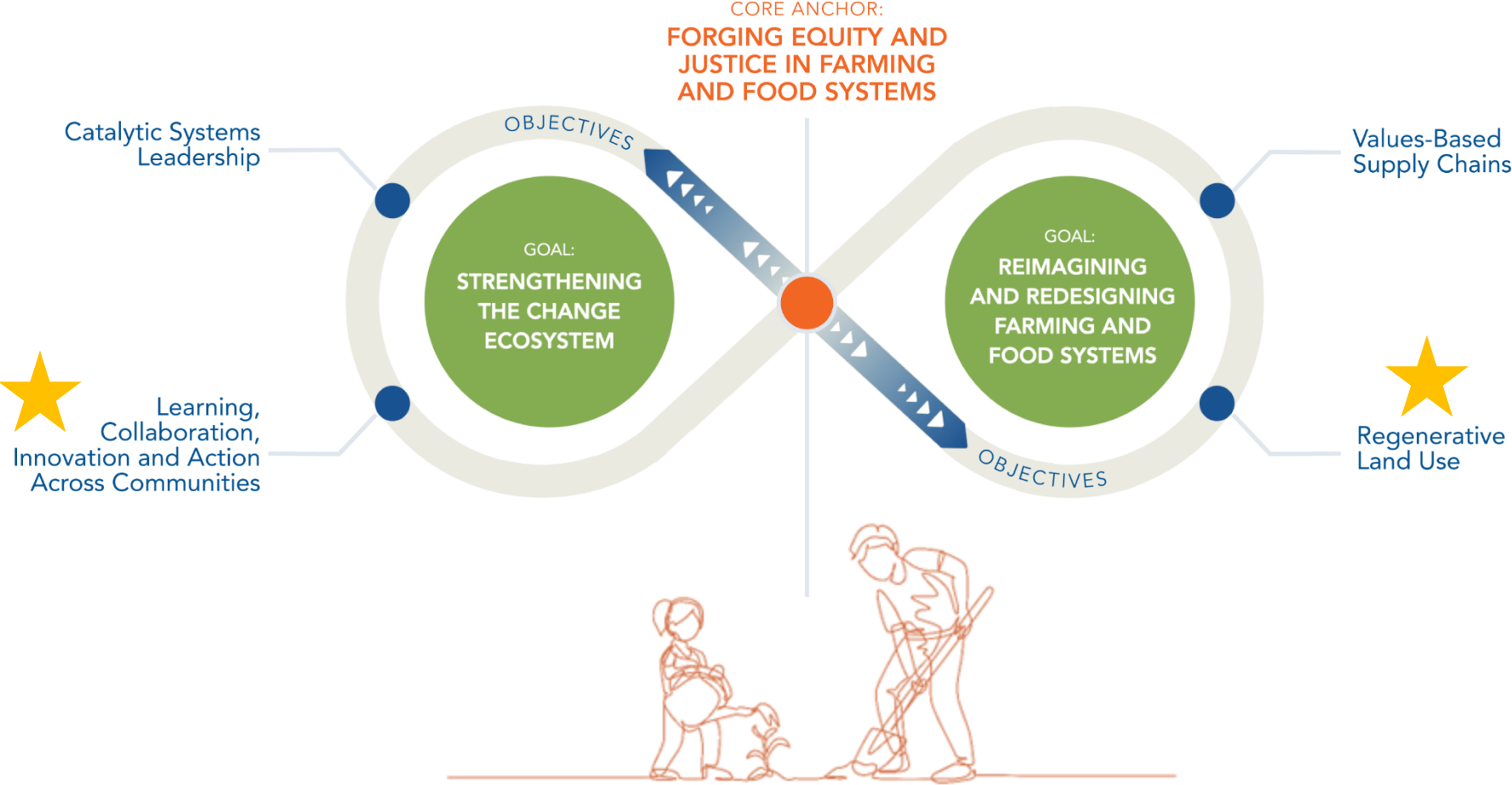
All communities have the power to nourish themselves and regenerate ecosystems through just food and agriculture systems. At the heart of these systems are dynamic networks of people connected through interdependent relationships with each other and the land.



OUR VALUES



OUR FRAMEWORK FOR CHANGE



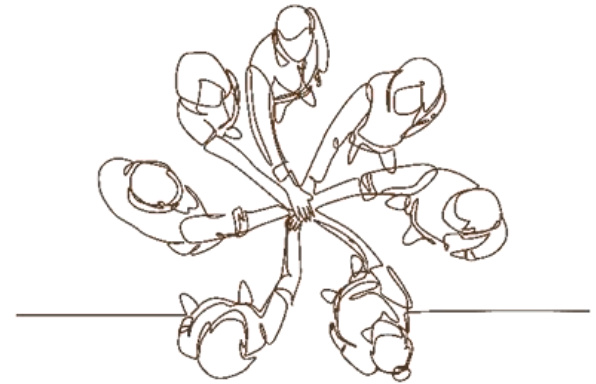
CONTEXT FOR PROGRAM

- 4 sister programs supported by EPA Gulf of Mexico Division
- Environmental *and* social goals
- Wallace Center's commitment as an intermediary



WALLACE CENTER ROLE

- Administering program
- Ensuring compliance with federal requirements
 - Helping with development of policies, procedures, & systems as needed
- Connective support between subawardees
 - Supporting networked learning
 - Bringing in trainings and workshops responding to subawardee needs and interests
- Environmental and social evaluation support
 - Centralized monitoring and evaluation system



ADVISOR ROLE

- Program design
- Outreach and getting the word out!
- Concept evaluation
- Co-design support, sounding board, pathway for program feedback, and more!



Felicia Bell, Farmer, RD & S Farm



Pakou Hang, Founder and former Executive Director, Hmong American Farmers Association



Mackenize Martinez, Technical Assistance Specialist for the Southeast, Intertribal Agriculture Council



Brennan Washington, 1890 Land Grant Liaison & Southeastern Outreach Coordinator, Southern SARE, and farmer, Phoenix Gardens



WHAT IS THE OPPORTUNITY?

- Funding authorized by Clean Water Act
 - centralized and flexible approach to meet EPA's data needs
- Recognizing underserved farmers as conservation leaders
- Networked, collective impact approach
- Potential on-ramp to capturing federal funds for some organizations



■

ELIGIBLE GEOGRAPHIES



ELIGIBLE APPLICANTS

Eligible entities

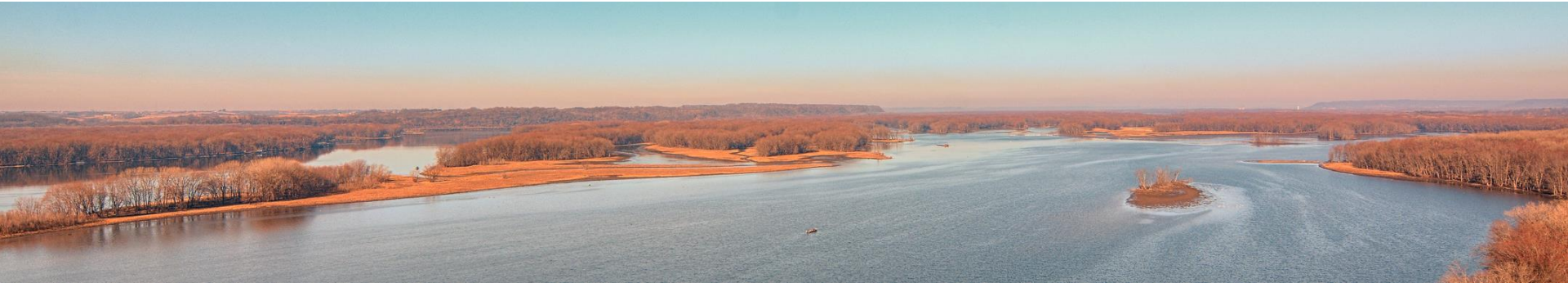
- state agencies,
- interstate agencies,
- federally recognized Indian tribes and tribal organizations,
- state-designated Indian Tribes
- local governments,
- institutions of higher learning (i.e., colleges and universities),
- Intertribal consortia
- and non-profit organizations as defined in 2 C.F.R. § 200

Not eligible

- individuals
- foreign organizations and governments,
- nonprofit organizations exempt from taxation under Section 501(c)(4) of the Internal Revenue Code that engage in lobbying,
- and “for-profit” organizations



DETAILS



- \$75,000 to \$250,000 over 3 years
- Focused on working with underserved farmers to improve **water quality, habitat, or forestry resilience or sustainability**
- Projects will need to track farmers served and acres reached
- Note: farmers include those who make management decisions concerning agriculture lands, including cropland, forestland, and grazing lands



EXAMPLE ELIGIBLE ACTIVITIES



- Outreach and technical assistance with historically underserved farmers or communities
- Financial assistance or approaches to incentives and capital for underserved farmers
- Collecting and analyzing data
- Communicating results and lessons learned within and among historically underserved communities and beyond
- Organizational planning to expand reach with underserved farmers
- **Your ideas here!**



TIMELINE

- **Initial concept phase** (March-May 15, 2023)
- **Project co-design phase** (mid-May-September 2023)
- **Award phase** (October-December 2023)
- **Implementation phase** (January 2024-December 2026)
- **Program closeout** (December 2026-February 2027)



CONCEPT PACKAGE

- Concept note (pg. 12 in RFA)
 - No more than 4 pages
 - Narrative template (*optional*)
- Simple budget
 - Overhead/indirects
 - Match not required
 - Budget template (*optional*)
- Shortlist of subaward expectations



EVALUATION OF CONCEPTS

Concept Review Criteria	Points
<p>Technical Approach Clarity, feasibility (including budget feasibility), and appropriateness of proposed technical approach for working with underserved farmers to achieve conservation goals.</p>	30
<p>Past Performance Level of previous collaboration with and organizational leadership by underserved farmers and communities on environmental challenges.</p>	30
<p>Organizational Capacity Extent of applicant’s capacity to meet expectations with EPA policies and federal subaward practices, e.g. monthly invoicing and quarterly reporting. Applicants are not assessed on having compliant policies and practices currently, but rather should focus on explaining capacity to develop and/or maintain those policies and practices, e.g. sufficient staffing.</p>	20
<p>Intersectionality and Potential to Support those Harmed Historically Clarity on project and organization’s approach to build intersectional power among Historically Underserved farmers and communities.</p> <p><i>For the purposes of this evaluation, intersectionality means an approach that considers the simultaneous experience of social categories such as race, gender, socioeconomic status, and sexual orientation. Power means having the resources and relationships to realize equitable, resilient, and sustainable farming systems.</i></p>	20
<p>Overall Rating (out of 100 points)</p>	100



POLLS/FEEDBACK QUESTIONS

- Is your organization thinking about applying as a lead applicant for this funding?
 - Yes!
 - No
 - Unsure of eligibility
 - Not sure yet
- Are you facing any barriers to applying for this funding?
 - No barriers at the moment!
 - Not enough time
 - Application is complex
 - Concerns about requirements
 - Other (consider putting in chat or sending a note to WallaceGrants@winrock.org - we want to hear from you!)





For further questions, contact

WallaceGrants@winrock.org



Wallace Center
AT WINROCK INTERNATIONAL